

# How can I get involved?

You can help by:

- being part of a working group on youth crime in your community, or setting up a group if your area doesn't have one yet
- using your contacts in the community to get more people involved
- working on projects that are part of your community action plan
- sharing your great ideas on initiatives to reduce youth crime.

Your local police station or Child, Youth and Family office may have talked to you about a local action plan to reduce youth crime. If they haven't, you can contact:

- the Ministry of Justice – [YCAPideas@justice.govt.nz](mailto:YCAPideas@justice.govt.nz) or 04 918 8800
- your local police station – ask for Youth Services
- your local Child, Youth and Family office – ask for the Youth Justice Manager
- your local council.

Get behind this kaupapa and help build a better future for the young people in your community.

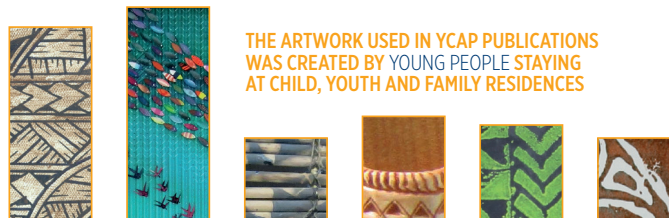
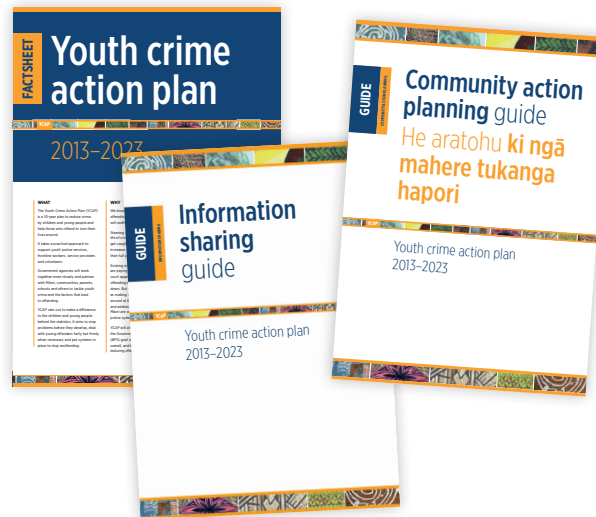
## Where can I get more information?

To find out more about the Youth Crime Action Plan (YCAP), go to [justice.govt.nz/ycap](http://justice.govt.nz/ycap)

You'll find lots of useful information here, including:

- an online toolkit of guidance and resources, including a community action planning guide
- the full YCAP plan and a summary version, which includes 'best practice' guidelines for people working with children and young people
- a factsheet about YCAP
- information resources for the public, such as government agencies' contact details and research reports.

You can also email [YCAPideas@justice.govt.nz](mailto:YCAPideas@justice.govt.nz) with questions and ideas.



THE ARTWORK USED IN YCAP PUBLICATIONS WAS CREATED BY YOUNG PEOPLE STAYING AT CHILD, YOUTH AND FAMILY RESIDENCES

MOJ0088.6 – JAN15

# Working together to reduce youth crime

HOW YOU CAN GET INVOLVED IN LOCAL EFFORTS TO HELP YOUNG OFFENDERS TURN THEIR LIVES AROUND

**Youth Crime Action Plan** • the national blueprint that guides community efforts in keeping kids out of trouble and helping those who offend turn their lives around

# Kahikatea tū i te uru

## THERE IS STRENGTH IN NUMBERS

Kahikatea trees are rarely seen alone – they thrive in groups. Because they have shallow roots, each tree's strength relies on the strength in numbers.

The same is true in our own communities, where each young person's potential depends on the environment that nurtures them.

We know that communities around New Zealand want more say in dealing with local youth crime. This came through loud and clear during the creation of the Youth Crime Action Plan, the national blueprint that guides efforts to keep kids out of trouble and help those who offend to turn their lives around.

Across New Zealand, youth crime has fallen in recent years. But challenges remain, including addressing the reasons why young Māori appear in the youth justice system at higher rates than other ethnic groups.

To tackle these issues, we need to work together and use our collective strength.



## Why get involved?

There isn't a one-size-fits-all way to solve the complex issues that lead to youth crime.

But we know that one of the best ways to improve things is for communities and government agencies to work together to identify problems and work on solutions in their local area.

And that's where you come in. Your community can make its own plan – and you can help.

You can make a difference by bringing skills or knowledge, volunteering, providing services or contributing to projects.

Community members, including parents, iwi and hapū, schools, service providers, ethnic communities and government agencies, all play a vital role – young people in your community need your whakaaro (ideas), insights and input to make your local plan work.



## What is a community action plan?

An action plan is like a road map for reducing youth crime in your community. It shows where your community is now, where it wants to go, and what steps you all will take to get there.

The goal isn't to save the world. The goal is just to get your community working together to decide what you should focus on and to take steps that will make the biggest difference for your young people and your community.

Each community action plan will be unique. The most important thing is that a wide range of people from the community and from government agencies help develop it.

