

THE NEW ZEALAND  
CRIME AND VICTIMS SURVEY  
KEY FINDINGS

CYCLE 2

OCTOBER 2018 – SEPTEMBER 2019



New Zealand Government

New Zealand  
Crime and Victims **survey**

HELP CREATE SAFER COMMUNITIES



# Disclaimer



1. While all care and diligence has been taken in processing, analysing, and extracting data and information for this publication, the Ministry of Justice gives no warranty that it is error free and will not be liable for any loss or damage suffered by the use directly, or indirectly, of the information in this publication.
2. This report contains highly aggregated data. No identifiable personal data are included in the report.
3. Estimates are obtained using Cycle 2 data and combined data across Cycle 1 and Cycle 2 (pooled data). See the NZCVS key findings Cycle 2 [report](#) for details.
4. Estimates in the text (including percentages) are rounded to the nearest thousands, hundreds or whole numbers.
5. This booklet contains mostly descriptive statistics. It does not include analysis of relationships between variables.

**Crown copyright © 2020**



This work is licensed under the Creative Commons Attribution 4.0 New Zealand licence. You are free to copy, distribute, and adapt the work, as long as you attribute the work to New Zealand Ministry of Justice and abide by the other licence terms. Please note you may not use any departmental or governmental emblem, logo, or coat of arms in any way that infringes any provision of the Flags, Emblems, and Names Protection Act 1981. Use the wording “New Zealand Ministry of Justice” in your attribution, not the New Zealand Ministry of Justice logo.

# About this booklet



---

This booklet provides insights and analysis of the New Zealand Crime and Victims Survey (**NZCVS**) results. It is based on the **NZCVS Key findings Cycle 2** report.

The NZCVS is a nationwide, face-to-face, annual, random-sample survey asking New Zealanders aged 15 and over about incidents of crime they experienced over the last 12 months. This includes both incidents reported to the Police and unreported incidents.

The findings presented reflect the second year of interviewing, which took place from October 2018 – September 2019. These findings are consistent with the [Cycle 1 \(March 2018 – September 2018\) outcomes](#) released in May 2019. This confirms the robustness and the reliability of the survey method. Where relevant, the Cycle 1 and Cycle 2 survey data are combined to obtain more accurate assessments.

The NZCVS data collection will continue until September 2020, which will make it possible to both increase the accuracy of the survey results and to analyse changes in the volume and structure of victimisation in New Zealand.

We will gradually provide other reports and resources on the NZCVS pages of the Ministry of Justice website. We are planning a series of follow-up reports on specific topics, such as Māori victimisation, consequences of crime, and reporting to the Police. These reports will continue the series of topical reports already published on the Ministry of Justice [website](#).

# The extent and nature of crime



A significant majority of adults<sup>1</sup> (70%) experienced no crime over the last 12 months<sup>2</sup>.

- ➔ 1,713,000 incidents occurred over the last 12 months, including 1,139,000 personal offences and 574,000 household offences.
- ➔ On average, there were 29 personal offences per 100 adults and 31 household offences per 100 households.
- ➔ About 1,207,000 adults (30% of the entire adult population) experienced at least one personal or household offence over the last 12 months.
- ➔ Over the last 12 months, about 593,000 adults (15%) experienced at least one personal offence and 378,000 households (20%) experienced at least one household offence.



<sup>1</sup> For the purpose of this survey adults are identified as people aged 15 years and above.

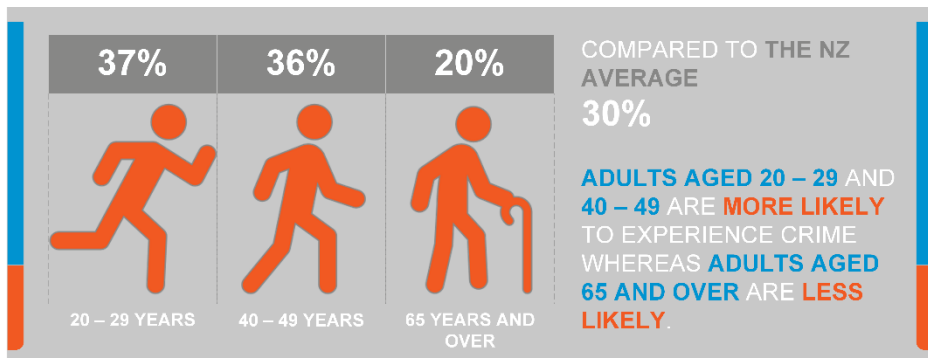
<sup>2</sup> From the date of the interview.

# Who experiences crime?



Adults aged 20–29 years (37%) and 40–49 years (36%) were more likely to experience crime than the NZ average (30%), whereas adults aged 65 years and over (20%) were less likely to experience crime.

- ➔ Māori (38%) were more likely to be victims of crime and Chinese Adults (22%) were less likely to be victims of crime compared to the NZ average.
- ➔ Analysis shows that Māori are younger and live in more deprived areas and these factors contribute to their higher likelihood of victimisation.
- ➔ Adults who had never married or been in a civil union (36%) were more likely than the NZ average to experience crime, while those who were widowed (17%) were less likely.



# Who experiences crime?



Adults **under financial pressure (36%)** were **more likely** to experience crime compared to the NZ average **(30%)**.

- ➔ Adults with moderate (43%) or high (51%) levels of psychological distress were more likely to be victims of crime than the NZ average.
- ➔ Adults who were not employed and not actively seeking work (43%) were more likely to experience crime than the NZ average, while retired people (25%) were less likely to experience crime.
- ➔ Households in more deprived areas were more likely to experience household offences.
- ➔ Adults living in single parent households (37%) were more likely to experience crime compared to the NZ average.

PEOPLE WHO ARE **UNDER FINANCIAL PRESSURE** OR **PSYCHOLOGICALLY DISTRESSED** ARE **MORE LIKELY** TO BE



**VICTIMS OF CRIME** COMPARED TO THE NZ AVERAGE (30%)

# Who experiences crime?



Bisexual adults experienced **over four times** as many personal offences (**126**) per 100 adults than the NZ average (**30 personal offences per 100 adults**).

- ➔ Adults living in Tasman (19%) and Southland (20%) were less likely to experience crime than the NZ average.
- ➔ The likelihood of experiencing household offences increased with number of children living in the household. Households with one or more children were more likely to experience a household offence.
- ➔ Households that were owned by the occupant were less likely to experience household offences, whereas households that were rented by the occupants were more likely to experience household offences than the NZ average.



← **ADULTS WHO IDENTIFY AS BISEXUAL**

...EXPERIENCED  
**OVER FOUR TIMES  
MORE PERSONAL  
OFFENCES PER 100  
ADULTS THAN...**



**THE NZ AVERAGE  
30 PER 100 ADULTS**

# Interpersonal violence



About **284,000** adults experienced **677,000** violent interpersonal offences over the last 12 months (**17 violent interpersonal offences per 100 adults**).

- ➔ Over a quarter of interpersonal violence incidents (28%) related to sexual assaults and a third related to physical violence (non-sexual assaults and robberies). The rest related to threats and damages (39%).
- ➔ Adults with a high level of psychological distress were over four times (29%) as likely than the NZ average (7%) to experience violent interpersonal crime.
- ➔ Students were more than twice as likely (16%) than the NZ average to experience violent interpersonal crime.
- ➔ Victims were injured in 56% of physical violence offences.

## RATES OF INTERPERSONAL VIOLENCE VICTIMISATION BY LEVEL OF PSYCHOLOGICAL DISTRESS

6%



LOW

20%



MODERATE

29%



HIGH

COMPARED TO  
THE NZ AVERAGE  
(7%)



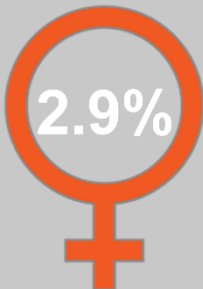


# Offences by family members

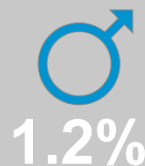


Women were **more than twice** as likely (**2.9%**) to experience offences committed by family members than men (**1.2%**).

- ➔ Over the last 12 months, **87,000** adults experienced over **250,000** offences committed by family members.
- ➔ Of those adults, **53,000** experienced offending by an intimate partner and **37,000** experienced offending by other family members.
- ➔ Sole parents with children (7.6%) were almost four times as likely than the NZ average (2.1%) to experience offences committed by family members.
- ➔ 44% of victims reported that they experienced anxiety/panic attacks and 40% experienced depression because of the offence.



**WOMEN ARE  
MORE THAN  
TWICE AS LIKELY  
TO EXPERIENCE  
OFFENCES BY  
FAMILY MEMBERS  
THAN MEN**





# Lifetime experience of violence

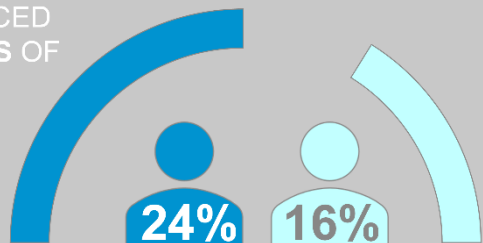


**Over a million** adults experienced either intimate partner violence (IPV) or sexual violence at some point during their lives.

- ➔ Almost one in six adults (16%) had experienced IPV and nearly a quarter (24%) had experienced sexual violence at some point during their lives.
- ➔ Women were almost 2.5 times more likely than men to have experienced IPV and 3 times more likely to have experienced sexual violence.
- ➔ Gay, lesbian or bisexual adults were more than twice as likely than the NZ average to experience IPV and sexual violence.
- ➔ 35% of separated/divorced adults experienced IPV and 36% experienced sexual violence at some point during their life.

ADULTS WHO EXPERIENCED ONE OR MORE INCIDENTS OF

-  SEXUAL VIOLENCE
-  INTIMATE PARTNER VIOLENCE



AT SOME POINT DURING THEIR LIVES

# Theft and damage offences



**Pacific adults (2.4%) were half as likely as the NZ average (4.9%) to experience theft and damage offences.**

- ➔ About 195,000 adults experienced 250,000 theft and damage incidents over the last 12 months.
- ➔ On average, there were 6 theft and damage incidents per 100 adults.
- ➔ Asian adults (3.5%) were less likely to experience theft and damage offences than the NZ average. Māori (7.8%) were more likely to be victims of theft and damage offences.
- ➔ Adults with a high level of psychological distress (12%) were more than twice as likely to experience theft and damage offences than the NZ average.

**195,000** ADULTS (4.9%) EXPERIENCED



**250,000**

**THEFT AND  
DAMAGE INCIDENTS  
6 PER 100 ADULTS**

# Fraud or cybercrime



Adults with household income of \$150,000 or more (**11.4%**) were **more likely** than the NZ average (**7.9%**) to experience fraud or cybercrime offences.

- ➔ Over 320,000 adults (7.9%) experienced 420,000 fraud or cybercrime incidents over last 12 months.
- ➔ Asian adults, especially Chinese (2.9%), were about half as likely as the NZ average to experience fraud or cybercrime offences.
- ➔ Older adults (aged 65 and over) (2.4%), retired people (3.5%) and widows (2.8%) were less likely to experience fraud or cybercrime offences than the NZ average.

## 320,000

ADULTS (7.9%) EXPERIENCED  
420,000 FRAUD OR  
CYBERCRIME INCIDENTS



# Burglary, trespass, vehicle offences



Sole parent households were **more likely** to experience burglary (**19%**) and trespass (**4%**) than the NZ average (12% and 2%, respectively).

- ➔ Households that were in the least deprived areas of the country were less likely to experience burglaries and trespasses than the NZ average.
- ➔ Families with four or more children (27%) were more than twice as likely than the NZ average (12%) to experience burglaries.
- ➔ Households with three or more people were more likely to experience vehicle offences than the NZ average, whereas single and couple-only households were less likely.

## NZ HOUSEHOLDS EXPERIENCED

**295,000**

**BURGLARIES**

16 PER 100  
HOUSEHOLDS



**49,000**

**TRESPASSES**

3 PER 100  
HOUSEHOLDS



**125,000**

**VEHICLE OFFENCES**

7 PER 100 HOUSEHOLDS



# Reporting to the Police



A quarter (**25%**) of all crime was **reported to the Police** over the last 12 months.

- ➔ Household offences (37%) were twice as likely to be reported to the Police than personal offences (18%).
- ➔ A vast majority of motor vehicle thefts (94%) were reported to the Police.
- ➔ Only 10% of fraud or cybercrime incidents were reported to the Police.
- ➔ Bisexual adults (14%) were less likely to report incidents to the Police than the NZ average (25%).

25%



OF ALL CRIME WAS  
REPORTED TO THE POLICE

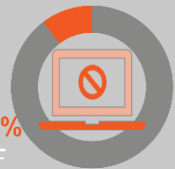
94%

OF  
MOTOR VEHICLE  
THEFTS



10%

OF  
FRAUD OR  
CYBERCRIME



WERE **REPORTED**

# Reporting to the Police

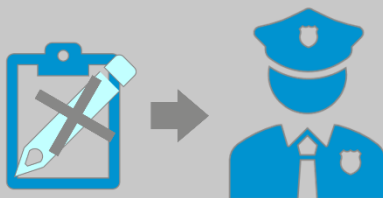


The vast majority of sexual assaults (94%) were **not reported** to the Police.

- ➔ People were more likely to report an incident to the Police when they viewed it as a crime or if they perceived it to be more serious.
- ➔ The most common reason given for not reporting to the Police was “too trivial / no loss or damage / not worth reporting” (48%). It was more likely to be given for not reporting household offences like burglary, trespass and vehicle offences than other offence types.
- ➔ The reasons “Shame / embarrassment / further humiliation”, “Dealt with matter myself / ourselves” and “Fear of reprisals / would make matters worse” were more likely to be given for not reporting interpersonal violence and sexual assault incidents than other offence types.

# 94%

OF SEXUAL ASSAULT  
INCIDENTS WERE NOT  
REPORTED TO THE  
POLICE

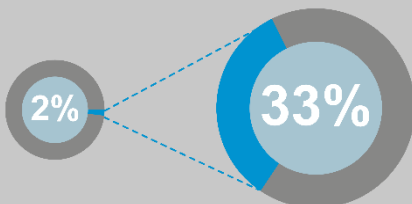


# Distribution of crime



**One third (33%)** of all crime incidents were experienced by only **2%** of adults.

- ➔ Victims who experienced multiple incidents within the last 12 months experienced the majority (70%) of all crime incidents.
- ➔ Interpersonal violence was the most repeated type of offence, with 74% occurring as part of a chain of two or more incidents within a 12-month period.
- ➔ Vehicle offences were the most common one-off incidents, with 77% occurring as one-off events.
- ➔ Over half (53%) of all interpersonal violence incidents were experienced by only 1% of adults.



**2% OF ADULTS**  
EXPERIENCED **ONE**  
**THIRD** OF ALL CRIME  
INCIDENTS



# Highly victimised adults<sup>3</sup>



Adults experiencing a high level of psychological distress (**16%**) were **over five times as likely** as the NZ average (**3%**) to be highly victimised.

- ➔ Adults more likely than the NZ average to be highly victimised were:
  - young adults (aged 20 – 29)
  - Māori
  - living in a one parent household
  - living in the most deprived areas
  - experiencing high levels of financial pressure
  - experiencing moderate to high psychological distress
  - reporting low levels of life satisfaction and lower feelings of safety.
  
- ➔ Adults less likely than the NZ average to be highly victimised were:
  - adults aged 65 years and over
  - Asian adults
  - living in a couple only household
  - not experiencing financial stress
  - not psychologically distressed
  - reporting high levels of life satisfaction and high feelings of safety.

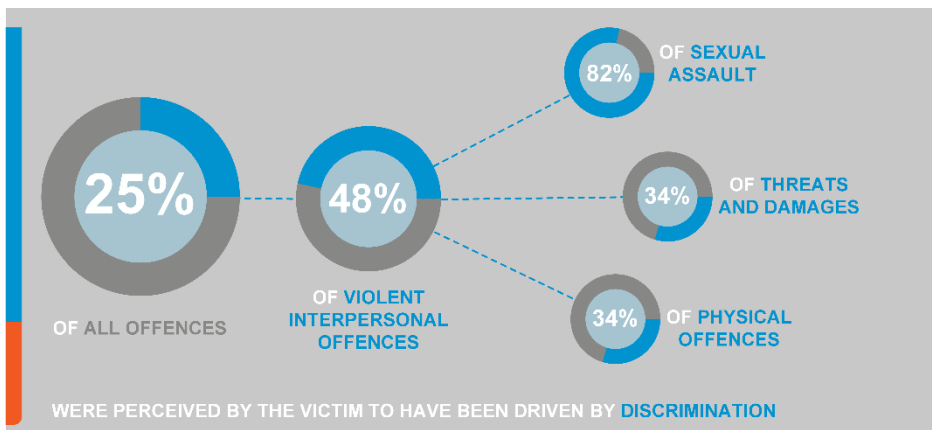
<sup>3</sup> We define highly victimised adults as those who experienced four or more incidents within a 12-month period.

# Perceptions of crime



**Two thirds (65%)** of all incidents were described by the victim as a crime, but only one third (35%) of interpersonal violence offences were considered a crime.

- One quarter (25%) of all incidents and about one third (32%) of all personal offences were seen by the victim as motivated by discriminatory attitudes.
- Sexual assault (82%), threats and damages (34%), and physical offences (assault and robbery) (34%) were the most common offence types to be considered by the victim as having been driven by discrimination.
- Almost a quarter (23%) of victims of Asian ethnicity felt the incidents that happened to them were driven by discrimination towards their race, ethnicity or nationality, compared to 7% of victims overall.





# More information



All observations in this booklet are based on the **NZCVS** key findings **Cycle 2** report and data tables. These documents and other resources are located on the **NZCVS** pages of the Ministry of Justice website below.

<https://www.justice.govt.nz/justice-sector-policy/research-data/nzcvsv/resources-and-results/>

*If you have any feedback or questions about NZCVS results, please email us at [nzcvsv@justice.govt.nz](mailto:nzcvsv@justice.govt.nz)*