

# Property crime in New Zealand



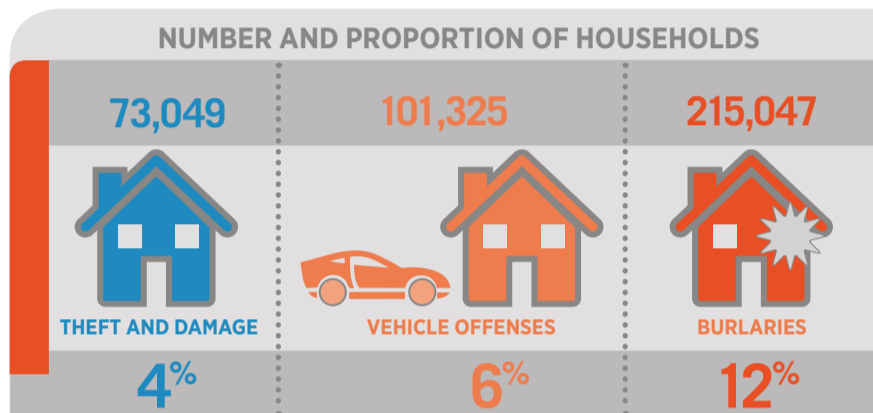
New Zealand Crime and Victims **survey**

HELP CREATE SAFER COMMUNITIES

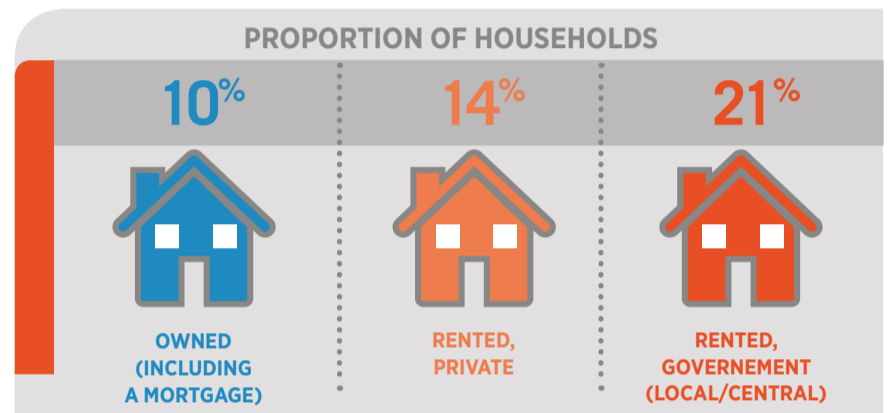
**CYCLE 1 | 2018**

- APPROXIMATELY 577,000 PROPERTY CRIME INCIDENTS HAPPENED OVER THE LAST 12 MONTHS.
- APPROXIMATELY 355,000 HOUSEHOLDS (20% OF ALL NEW ZEALAND HOUSEHOLDS) EXPERIENCED ONE OR MORE PROPERTY CRIME INCIDENTS OVER THE LAST 12 MONTHS.
- THERE WERE APPROXIMATELY 32 PROPERTY CRIME INCIDENTS PER 100 HOUSEHOLDS.

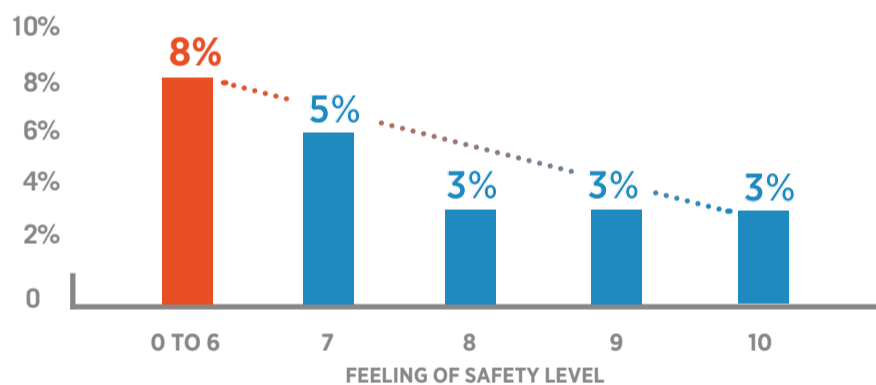
## NUMBER AND PROPORTION (ROUNDED) OF HOUSEHOLDS THAT EXPERIENCED PROPERTY CRIME WITHIN THE LAST 12 MONTHS



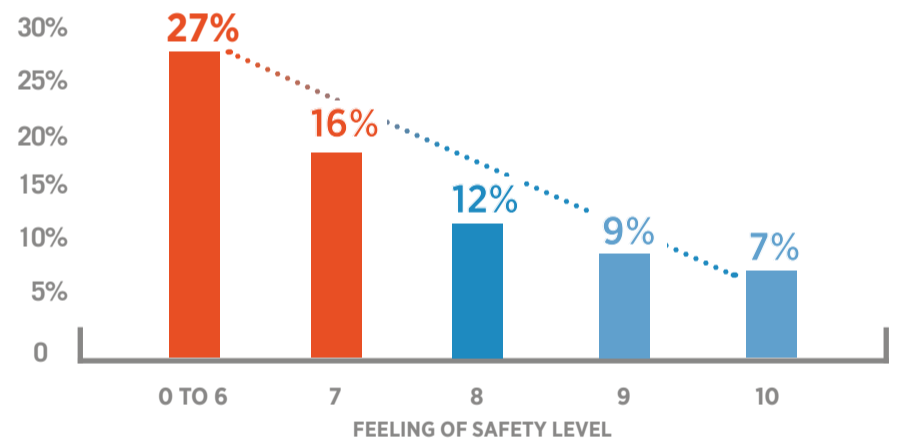
## PROPORTION OF HOUSEHOLDS THAT EXPERIENCED INCIDENTS OF BURGLARIES, BY RESIDENCY OWNERSHIP



## PROPORTION OF HOUSEHOLDS THAT EXPERIENCED THEFT AND DAMAGE, BY PERCEPTION OF SAFETY



## PROPORTION OF HOUSEHOLDS THAT EXPERIENCED INCIDENTS OF BURGLARY, BY PERCEPTIONS OF SAFETY

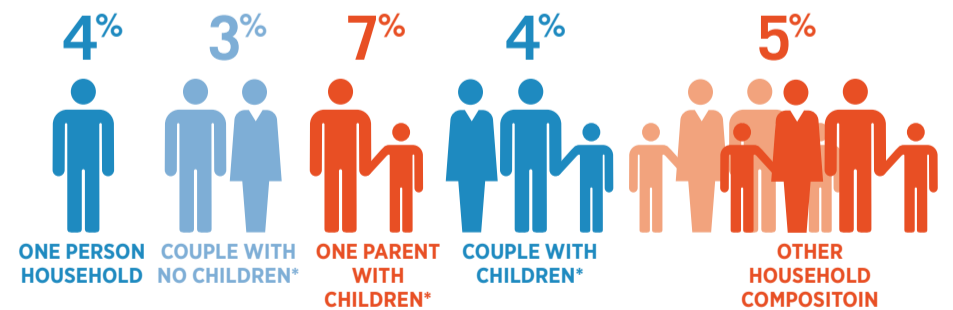


There is an association between people's **experience of property crime and their feelings of safety**, **higher levels of perceived safety** are associated with fewer property crime experiences.

## PROPORTION OF HOUSEHOLDS THAT EXPERIENCED VEHICLE OFFENCES, BY HOUSEHOLD SIZE



## PROPORTION OF HOUSEHOLDS THAT EXPERIENCED THEFT AND DAMAGE, BY HOUSEHOLD COMPOSITION



\*With or without other person(s)

Generally, **lone parent households and households with larger numbers of people** are more likely to experience property crime.

## PROPORTION OF HOUSEHOLDS THAT EXPERIENCED THEFT AND DAMAGE, BY REGION.

